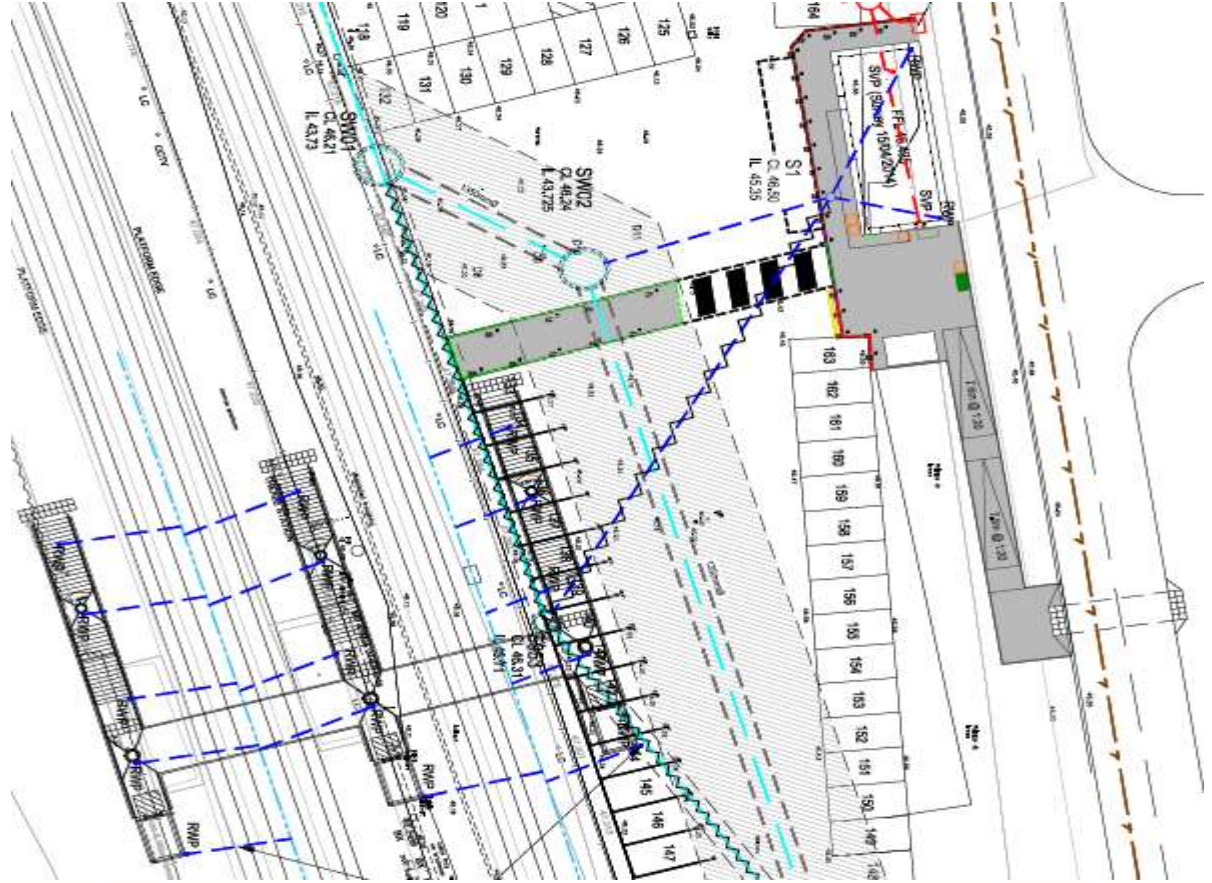


Theale Station Improvements

16th September 2014



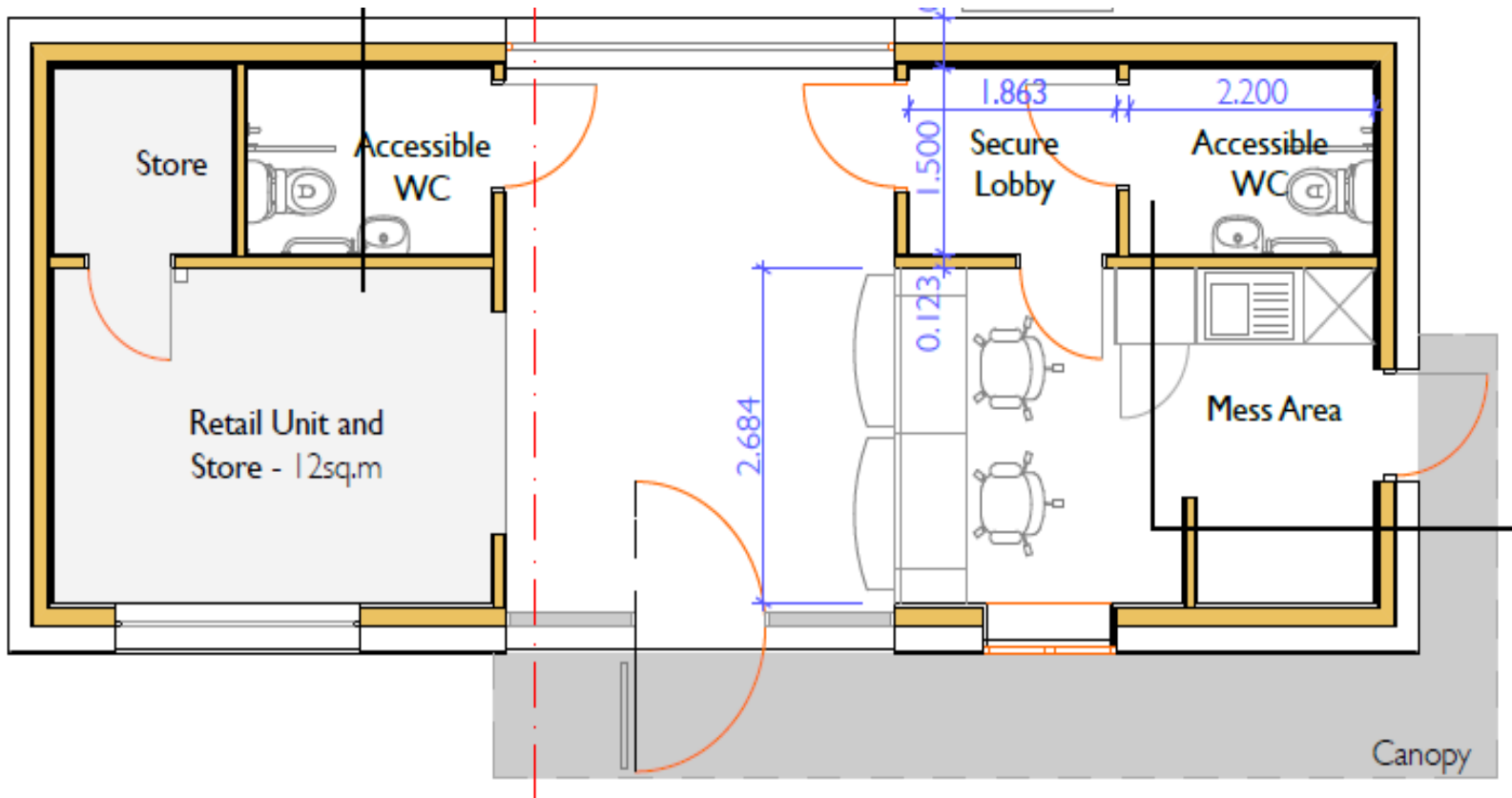
Site Layout



Ticket Office



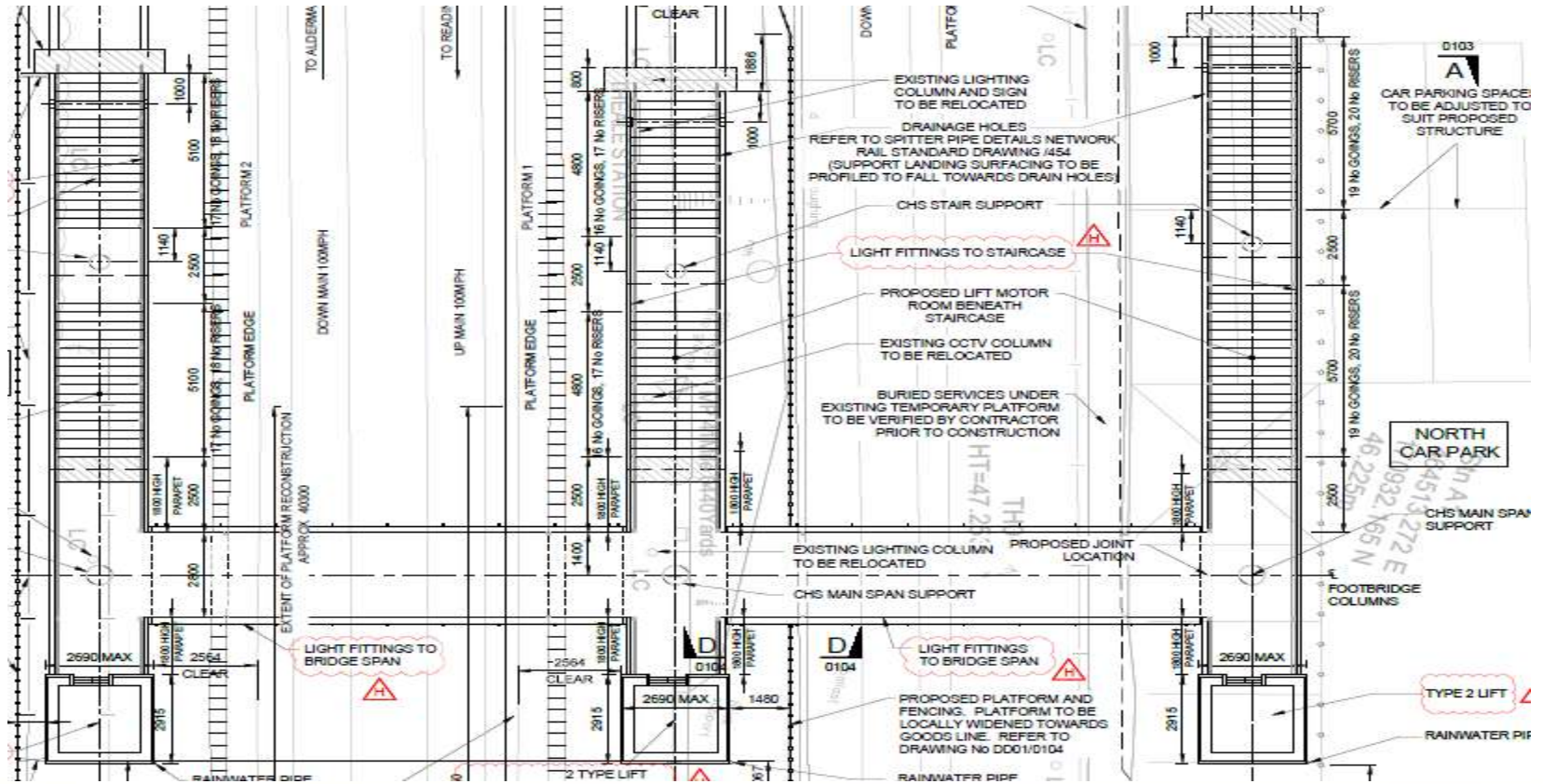
Ticket Office



Enabling Works



Lift Bridge



Timescale

- Anticipated commencement October 2014
- Projected completion July 2015



Train Services

- Electrification of the mainline means improved reliability from more environmentally friendly trains
- New trains will improve capacity
- Opportunity for faster journeys and improved timetable



Other improvement works to station area

- Replace shelters on all platforms
- New Ticket Vending Machine in area of lift bridge
- Additional cycle parking
- Clearly marked walkways around the site
- New pedestrian entrance and crossing point across Brunel Road
- Vegetation clearance
- Clear signage to link with Theale village centre, Arlington Business Park and other key destinations



St Austell



St Austell

