



Summer is a'coming

Theale and Tilehurst Cricket Club is a small, friendly organisation with a good social life, whose main ground is situated in the village on the recreation field in Englefield Road. They have three Senior Saturday teams playing in the Thames Valley Cricket League in divisions four, six and seven. They also run two social Sunday teams and then run a couple of indoor league teams over the winter.

Senior practice sessions are on Tuesday evenings and take place in the Little Heath School Sports Hall, Tilehurst between early February and late March, when, after a short break, they move to outdoor nets at the Theale ground.

They run as many youth teams as numbers permit in the U9, U11, U13, U15 and U17 age groups, playing clubs within about a 10 mile radius. Youth Practice Sessions also take place in the Little Heath School Sports Hall, Tilehurst, and the dates and times for each age group are outlined on the club website. These sessions run on a Tuesday and Thursday from mid-February to the end of March, when, after a short break, like the seniors, they move to outdoor nets at the Theale ground.

There is an active social scene at the club with various events throughout the year including two tours (one to Spain), quizzes, curries, and even a morning of cricket just after Christmas no matter the weather! New members are always welcome.

For contact and practice details for the club please see their website www.thealeandtilehurst.co.uk or contact Phil Mead - email: chairman@thealeandtilehurst.co.uk, tel: 07789 145398.

Theale Carnival 2016



Do you have a flair for organising fun? Can you offer a couple of hours to help organise Theale Village Fete and Carnival? Theale Village Community Association (TVCA) is currently preparing for this year's event and they need your help!

Returning for a second year from 12 noon on Saturday 9th July, at North Street Playing Fields, this not-for-profit event aims to give the whole of Theale's community a chance to come together whilst raising money for local community groups and charities.

Once again, there will be a fun packed range of activities and attractions at the Carnival and Fete, including fairground

rides, community games, independent traders and displays from Urban Stylez Dance Crews, Broadway Dance Academy and Reading Tae Kwon Do. The line-up also includes a dog show, craft and produce competitions, a grand raffle and of course the carnival parade, featuring an Olympic theme this year.

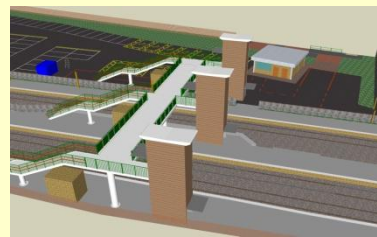
But to make sure the day goes smoothly, they need some more helping hands! You can help in a variety of ways, from pre-event planning such as event promotion, logistics or helping them find raffle prize donations, to selling advertising space in the event programme. Or you can simply lend a hand on the day - helping with the setting up of stalls and games, collecting litter, or volunteering as a parking attendant.

Local businesses are also encouraged to get involved in a variety of ways from donating goods and services to stage the event, providing raffle prizes or by taking advantage of the advertising and sponsorship opportunities on offer.

If any readers are interested in volunteering, do get in touch! Email thealecarnival@outlook.com or contact them via Facebook, www.facebook.com/thealecarnival, where you can also keep up with their latest news!

Have you heard about

Theale Station



At the beginning of March, Theale's Future checked the progress made by Network Rail regarding the tendering process for the work to update Theale Station. In the previous update from Network Rail back in

October 2015, the expectation from Network Rail was that the tendering process would be complete by the end of March and the work could be planned soon after.

But the project has been stalled yet again....

In June 2015 the Secretary of State for Transport received advice that the costs and timescales of some of Network Rail's enhancement projects had increased beyond expectation. He appointed Sir Peter Hendy as the Chair of Network Rail and commissioned him to conduct a thorough review of the "Control Period 5" (2014 to 2019) enhancements programme in England and Wales. This review has been completed, and a report was published by Sir Peter Hendy in November 2015 which is available online.

From the perspective of the Theale station upgrade, this project is part of the "Access for All" ("AfA") project mentioned in the report. The report does not mention specific stations, but it states that the AfA is one of the "Projects with significant delivery in CP5 and completion in CP6".

So at the moment all we know is that the Theale station upgrade will be completed some time before the end of 2024! ("Control Period 6" runs from 2019 to 2024.) But given the Theale station work is only a small part of the AfA project, it might be completed sooner.

Theale's Future wrote to our MP, Alok Sharma, who provided a response he had received from the Minister for Rail Issues, Claire Perry. She stated that Network Rail will publish a revised delivery plan during Spring 2016.

Safer

Prosperous

Healthy

Accessible

Greener

IKEA

Walking east from Theale along the old A4 towards the footbridge over the M4 the view is mainly of a north-south row of trees which partly hides the IKEA buildings on the north-east side of the M4. There is a large gap in the trees, however, where the old A4 is truncated by the M4 and this gap is now dominated for the whole length of the road from Theale to the footbridge by a view of the IKEA car park. If the end section of the old A4, from the motorway to the boundary fence and from the fence back as far as the substation, were to be dug up and planted with trees, the view along the road would be vastly improved for the benefit of all users of that path.

Alan Macro, our District Councillor, has been investigating this and has informed us that WBC is planning to plant some poplars this spring.

There is news of other IKEA planning applications that affect the view of IKEA from Theale. The proposal to erect a "tower" has been withdrawn and the application for a large sign on the roof has been refused. This leaves outstanding the application to put signs on the sides of the buildings. This planning application (15/03426/ADV) may be seen at West Berkshire web site <http://publicaccess.westberks.gov.uk/online-applications/search.do?action=simple&searchType=Application>

Lloyds Bank Closure

The Bank intends to close its doors on June 8th. A petition with a total of 587 signatures to save the branch from closure was submitted by Alan Macro to the bank early in March.

WBC Budget Cuts

The period of public consultation about the budget cuts required of West Berkshire (which includes the proposals to close the library) has finished and will be considered in the council meeting on 24th March. The details may still be seen at www.westberks.gov.uk/budgetproposals.

Alan Macro submitted the final sheets of his petition to save Theale library from closure to West Berks Council just before the consultation on the cuts closed. It totalled 504 signatures. He also asked that the many comments made on the on-line version be regarded as responses to the consultation.

Water Works at the Station

The traffic lights have gone and the traffic flows but the ramps on the pedestrian footway will remain for a long time to come. The following is from Thames Water:

"The lights, which had been in place since Christmas, were needed during a lane closure in place to accommodate a temporary over ground water pipe. The temporary pipe has now been secured to the bridge and so the lights are no longer required. The pipe is carrying water to nearby properties while repairs are carried out on a broken pipe close to the railway line.

Thames Water has been carrying out surveys on the broken pipe to help engineers design a solution to the complex problem. The surveys have shown that a long section of the pipe must be replaced. As the pipe runs next to the railway line, all the options regarding how to do this must be scrutinised carefully to avoid any risk of affecting either

customers or rail passengers. The design team is working closely with Network Rail to gain the necessary approval. In the meantime, we are sorry but the ramps will have to stay in place on the bridge until further notice.

If you need to contact us, please call our customer centre on 0800 316 9800 quoting your address and reference number CAP2/ BB186270. The lines are always open."

Proposed new Primary School

The Parish Council still has no news on when this project will be going ahead but we will keep you informed.

The Red Lion



The developer of the Red Lion has had his appeal against refusal of planning permission for one of his applications dismissed. However, this was only because he had not agreed to provide, or pay for, any affordable housing. The inspector did not agree with

West Berks Council's other reasons for refusal. These were regarding overlooking neighbouring properties and road safety concerns. Another of the developer's applications, with one less flat, will be heard by the Council's Eastern Area Planning Committee on 23rd March, with a site visit on Wednesday 16th.

The Save the Red Lion Campaign has been given the timescale within which it needs to advise the Council and the developer on whether it intends to mount a bid for the pub under the "asset of community value" scheme.

What's On

Easter at Holy Trinity Church

Palm Sunday 20th March - 10.30 am Parish Communion
4pm Family Church with real donkeys. Starts at St. Luke's and finishes at Holy Trinity.
Good Friday 25th March 12 Noon Walk of Witness (starts from Holy Trinity)
2 pm - 3 pm an Hour at the Cross
Easter Sunday 27th March 10.30 am Holy Communion and Children's Easter Egg Hunt

For the dates of regular events at the Village Hall, Social Club and pubs around the village visit our website www.thealevillage.com

There is a Cadbury Easter Egg Hunt at Basildon Park from 10 am until 3.30 pm on 25 to 28 March. Cost £3 per child plus normal admission charges.

How to Contact Us

If you would like to contact Theale's Future regarding any of the articles in this newsletter, or be involved with the group, we would love to hear from you:

Email: tf@thealevillage.com

Post: Theale's Future, c/o TPC, The Pavilion, Englefield Road, Theale RG7 5AS.

NOTE: These newsletters are available online at www.thealevillage.com

Safer

Prosperous

Healthy

Accessible

Greener